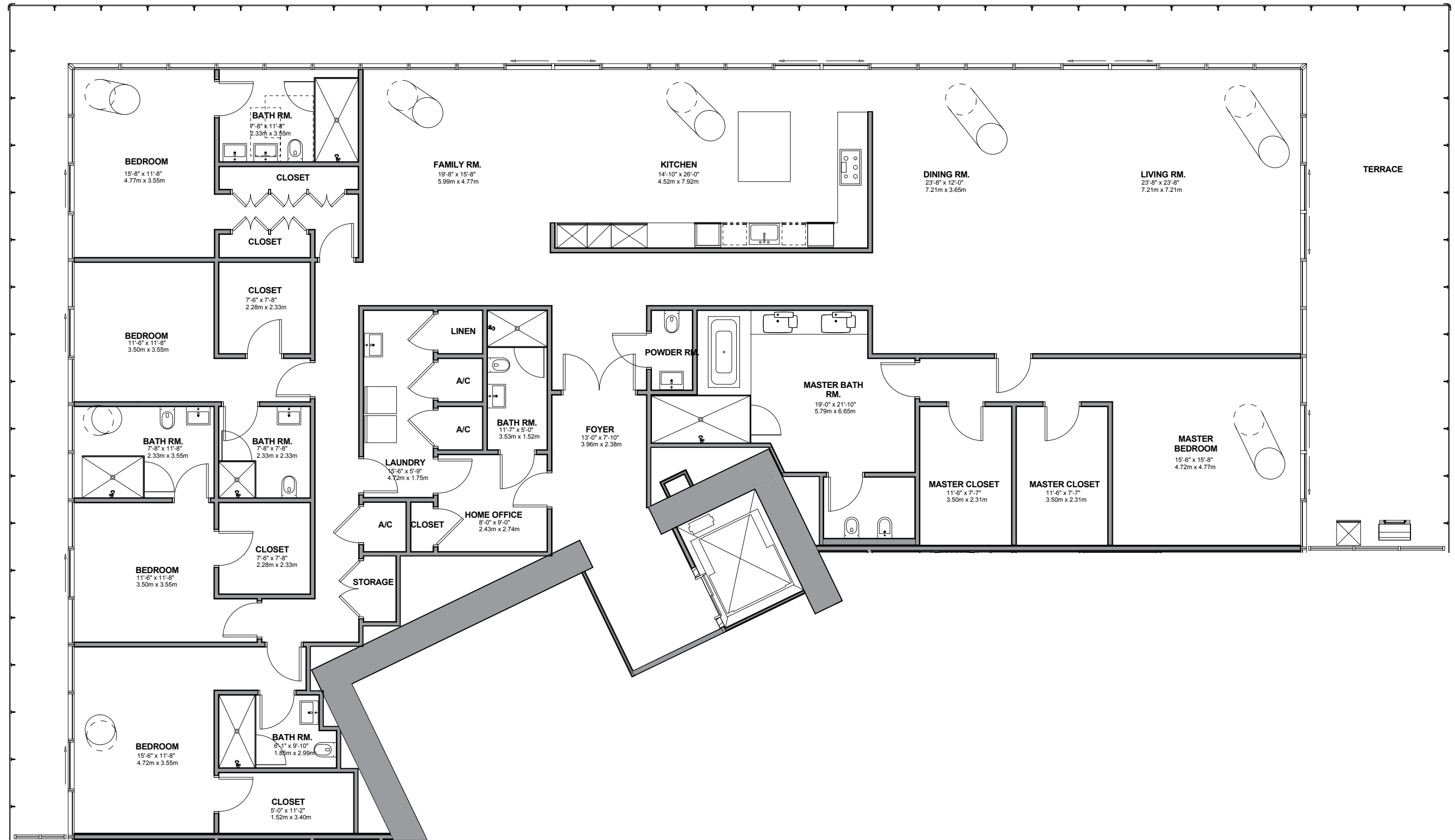


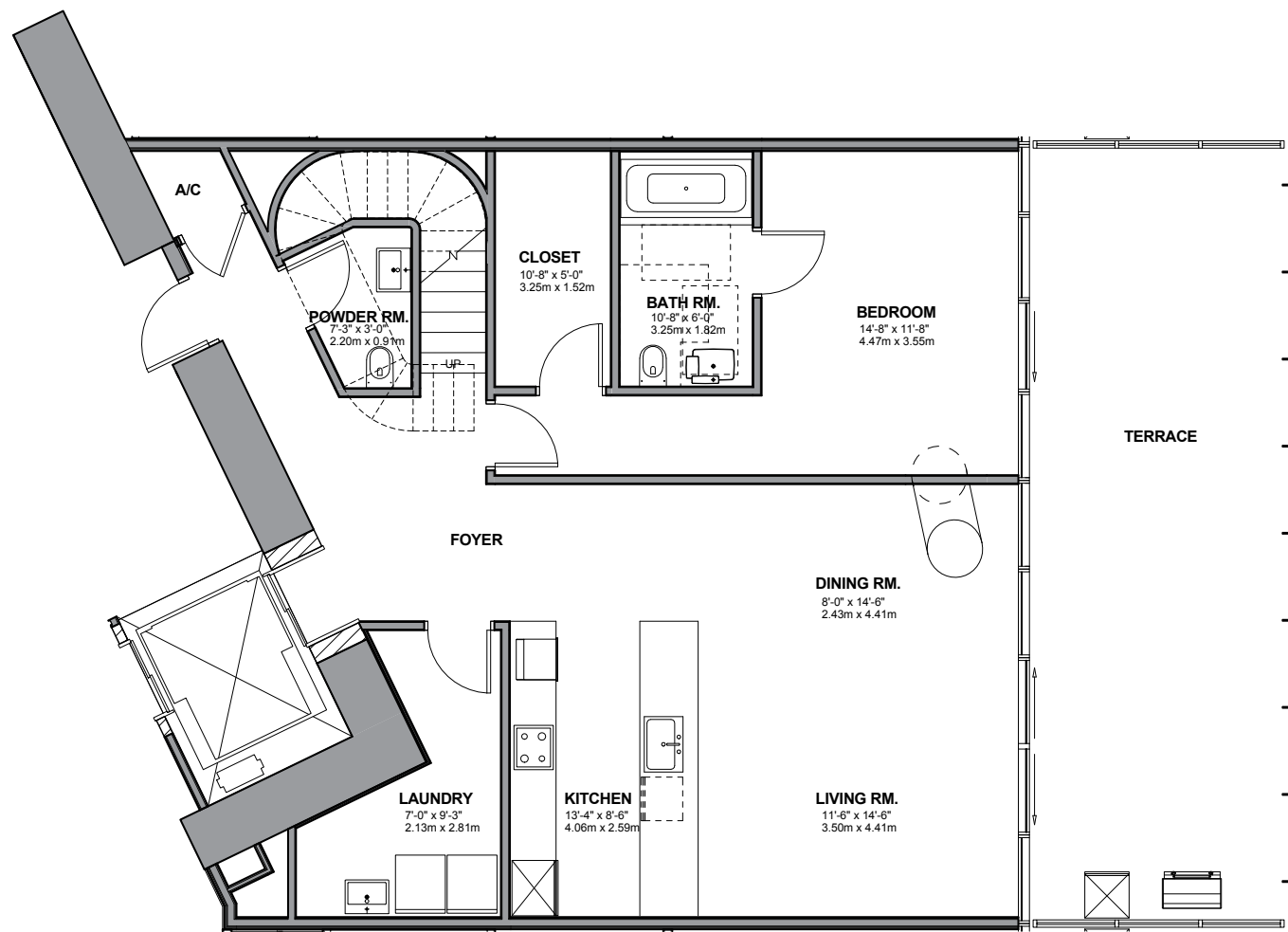


SOUTH TOWER



AREA CALCULATION: TYPE An5		
INTERIOR:	EXTERIOR:	TOTAL:
4878 SF	1328 SF	6206 SF
453.18 m <sup>2</sup>	123.38 m <sup>2</sup>	576.56 m <sup>2</sup>

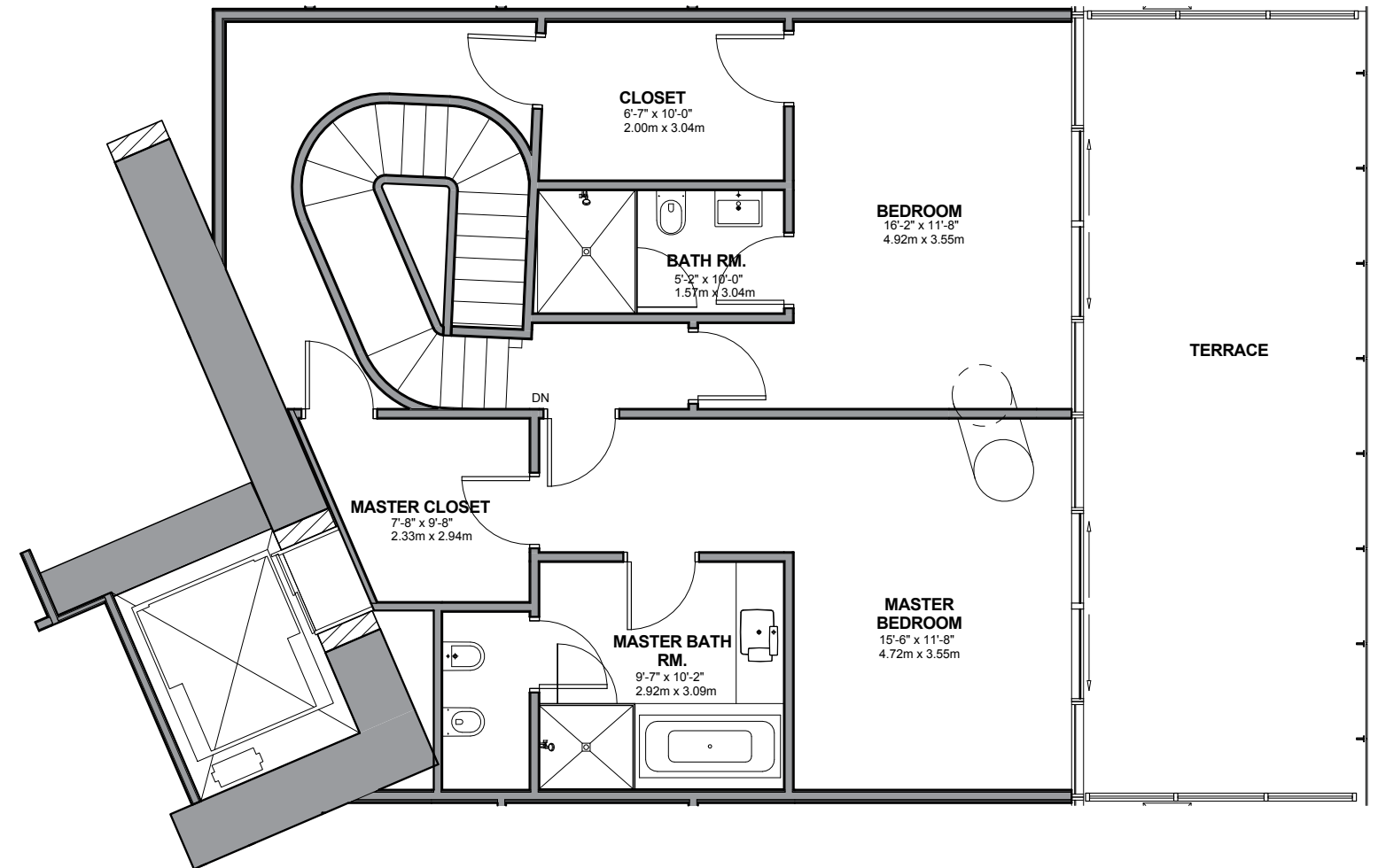




1  
MA205

**SOUTH TOWER-UNIT B3-LEVEL 07**

1/4" = 1'-0"

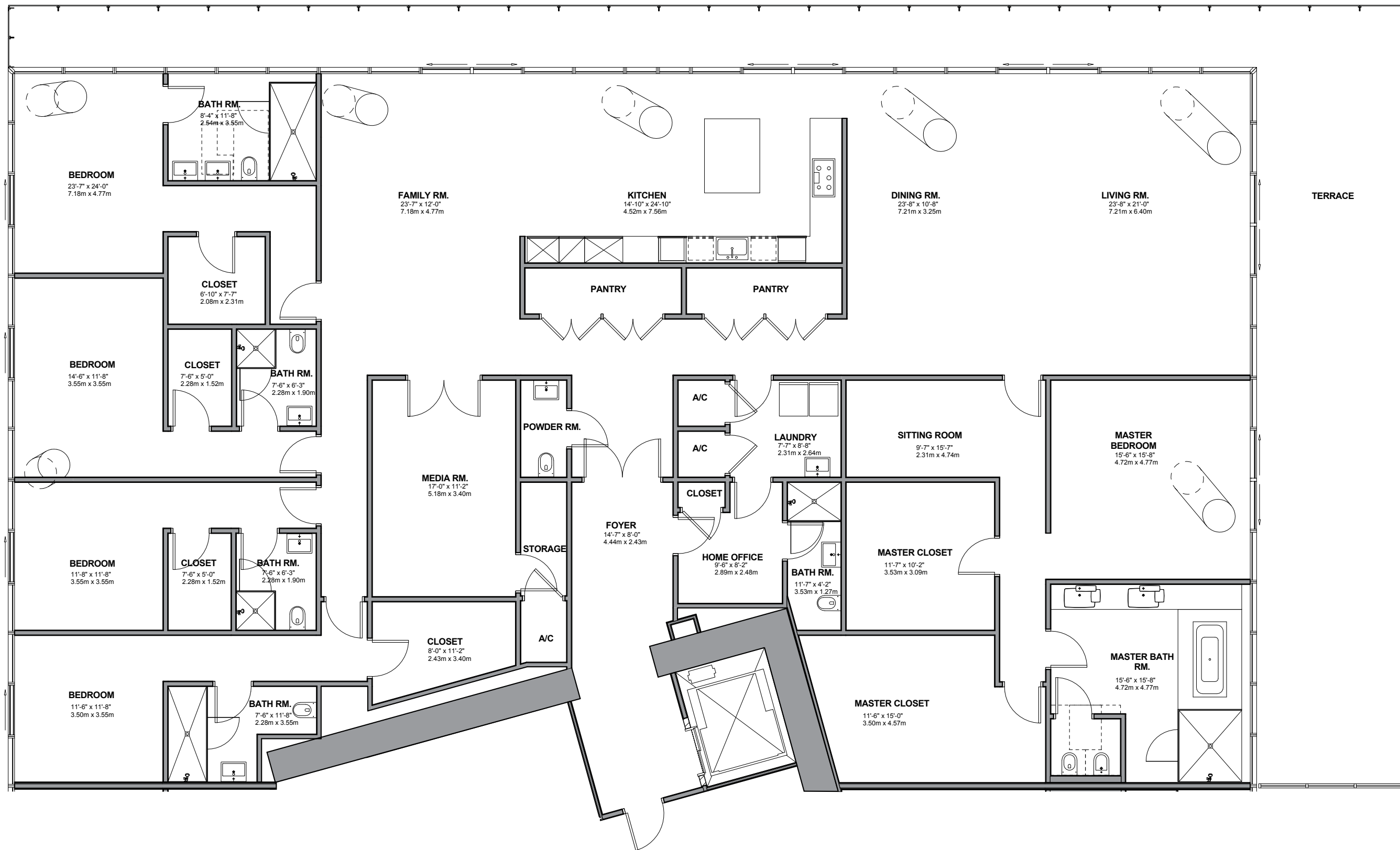


1  
MA205

**SOUTH TOWER-UNIT B3-LEVEL 06**

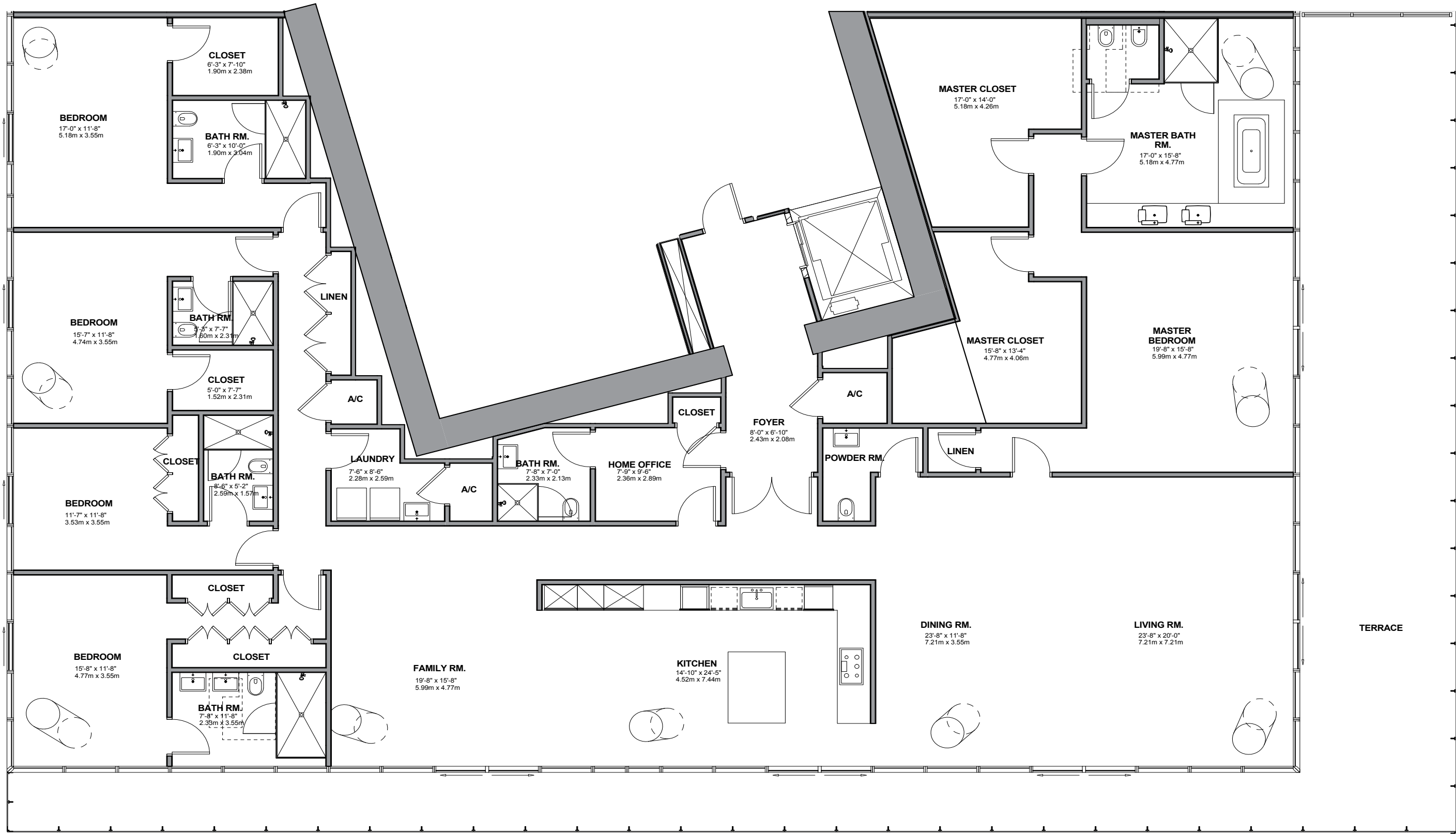
1/4" = 1'-0"

AREA CALCULATION: TYPE B3		
INTERIOR:	EXTERIOR:	TOTAL:
1235 SF	410 SF	1645 SF
114.74 m <sup>2</sup>	38.09 m <sup>2</sup>	152.83 m <sup>2</sup>
1108 SF	382 SF	1490 SF
102.94 m <sup>2</sup>	35.49 m <sup>2</sup>	138.43 m <sup>2</sup>



**AREA CALCULATION: TYPE An5**

INTERIOR:	EXTERIOR:	TOTAL:
5313 SF	1167 SF	6480 SF
493.59 m <sup>2</sup>	108.42 m <sup>2</sup>	602.01 m <sup>2</sup>



AREA CALCULATION: TYPE AS5		
INTERIOR:	EXTERIOR:	TOTAL:
4945 SF	1233 SF	6178 SF
459.41 m <sup>2</sup>	114.55 m <sup>2</sup>	573.95 m <sup>2</sup>

1  
MA205

**SOUTH TOWER—UNIT AS5—LEVEL 10**

1/4" = 1'-0"



AREA CALCULATION: TYPE An5		
INTERIOR:	EXTERIOR:	TOTAL:
4993 SF	1168 SF	6161 SF
463.86 m <sup>2</sup>	108.51 m <sup>2</sup>	572.38 m <sup>2</sup>

1  
MA205

SOUTH TOWER—UNIT AN5-LEVEL 11

1/4" = 1'-0"





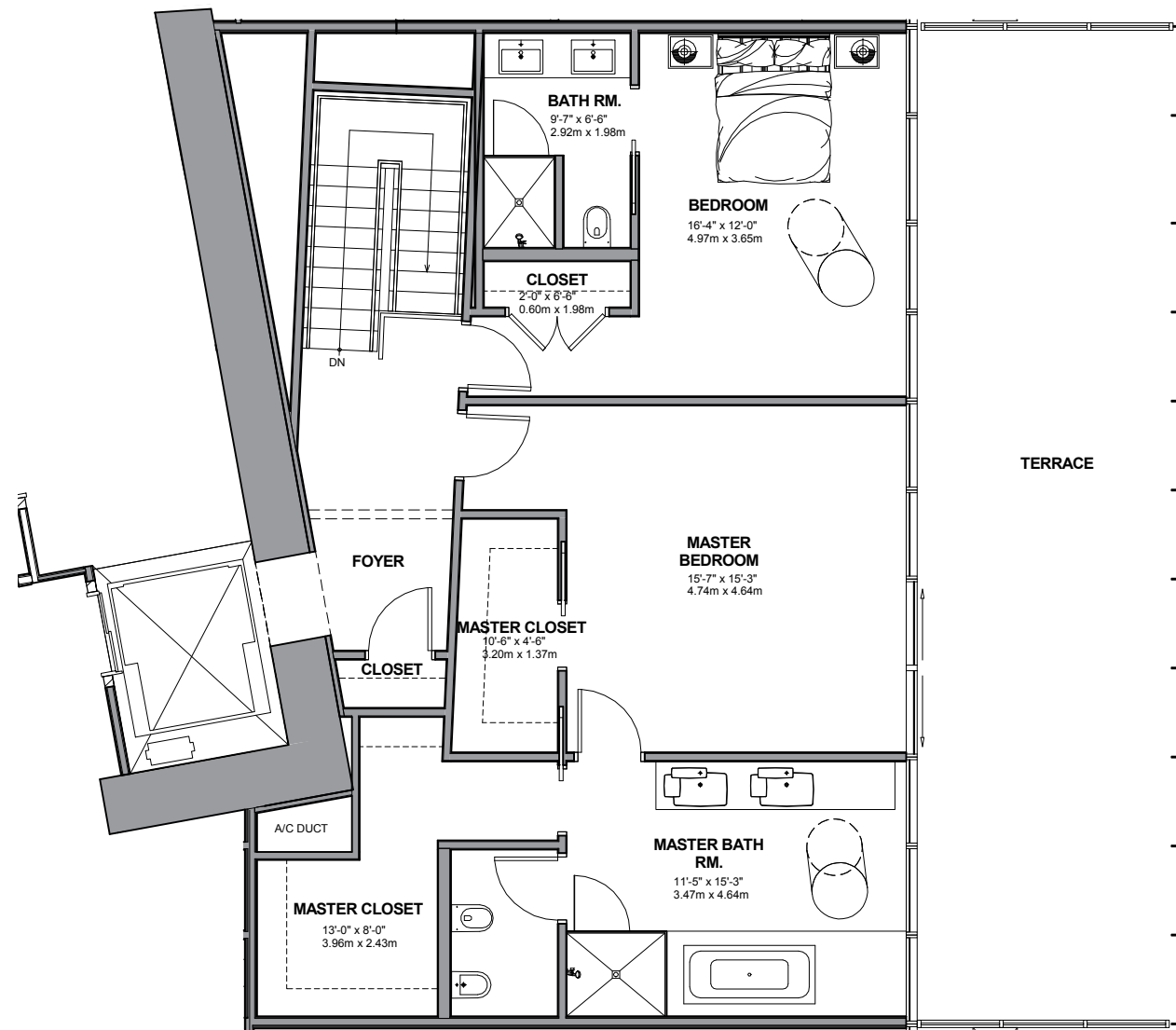
**AREA CALCULATION: TYPE As5**

INTERIOR:	EXTERIOR:	TOTAL:
3720 SF	839 SF	4559 SF
345.60 m <sup>2</sup>	77.95 m <sup>2</sup>	423.54 m <sup>2</sup>

1  
MA205

**SOUTH TOWER—UNIT AS4-LEVEL 11**

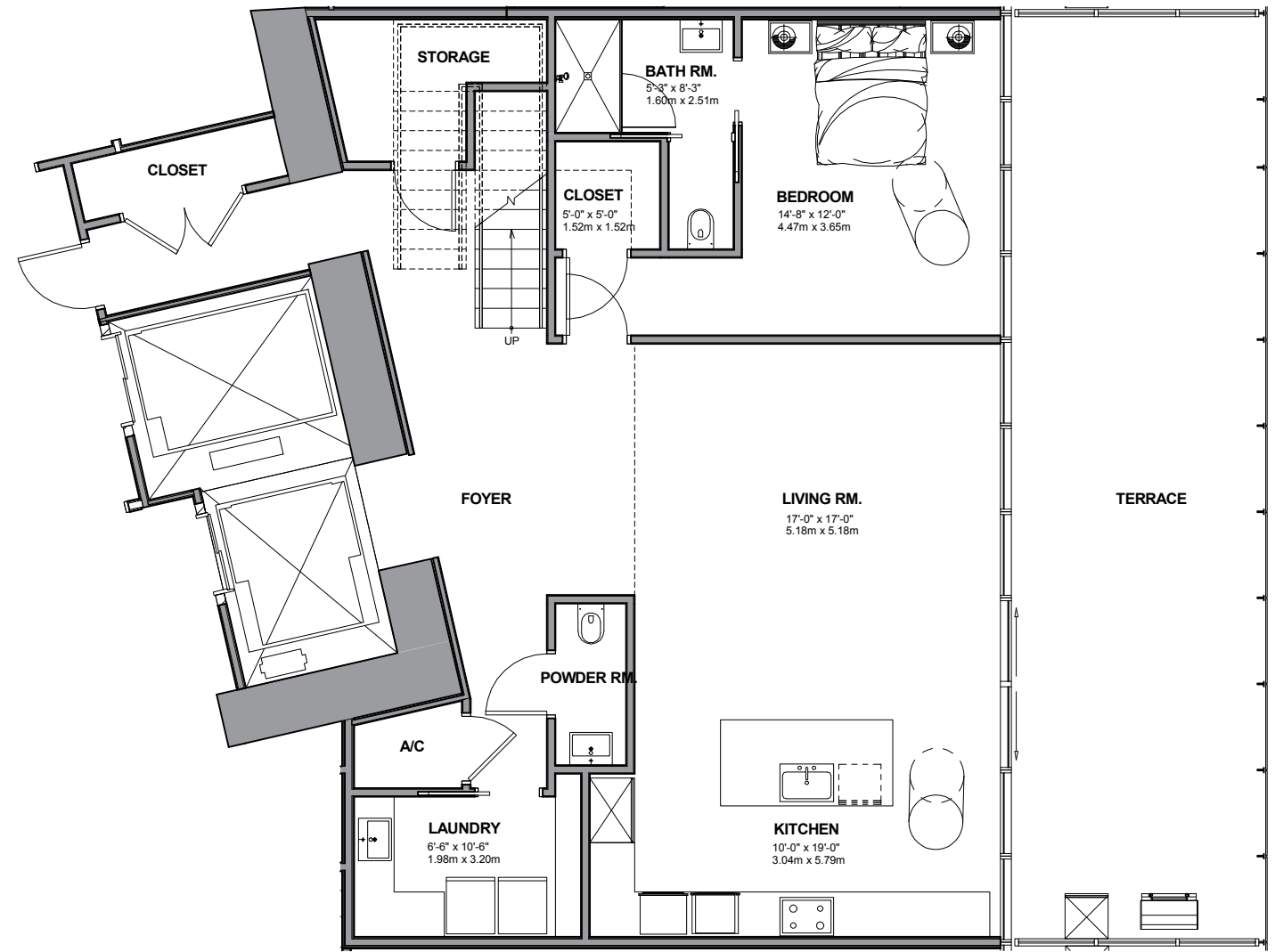
1/4" = 1'-0"



1  
MA205

**SOUTH TOWER-UNIT B3-LEVEL 12**

1/4" = 1'-0"



1  
MA205

**SOUTH TOWER-UNIT B3-LEVEL 11**

1/4" = 1'-0"

**AREA CALCULATION: TYPE B3**

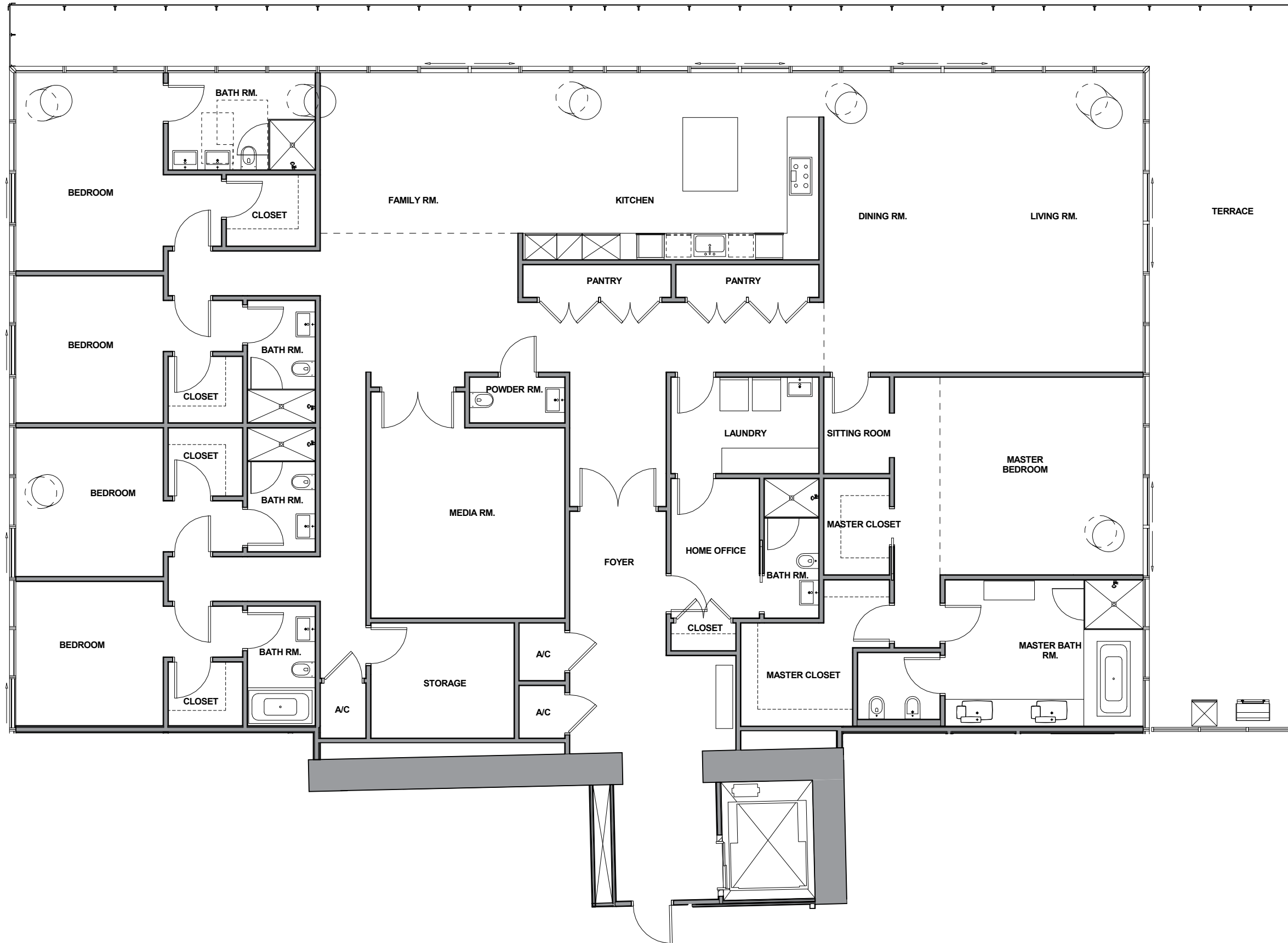
INTERIOR:	EXTERIOR:	TOTAL:
1289 SF	540 SF	1829 SF
119.75 m <sup>2</sup>	50.17 m <sup>2</sup>	169.92 m <sup>2</sup>

**AREA CALCULATION: TYPE B3**

INTERIOR:	EXTERIOR:	TOTAL:
1354 SF	520 SF	1874 SF
125.79 m <sup>2</sup>	48.31 m <sup>2</sup>	174.10 m <sup>2</sup>

**AREA TOTAL: TYPE B3**

INTERIOR:	EXTERIOR:	TOTAL:
2643 SF	1060 SF	3703 SF
245.54 m <sup>2</sup>	98.48 m <sup>2</sup>	344.02 m <sup>2</sup>



**AREA CALCULATION: TYPE An5**

INTERIOR:	EXTERIOR:	TOTAL:
4879 SF	1141 SF	6020 SF
453.27 m <sup>2</sup>	106.00 m <sup>2</sup>	559.28 m <sup>2</sup>

1  
MA205

**SOUTH TOWER—UNIT AN5-LEVEL 17**

1/4" = 1'-0"

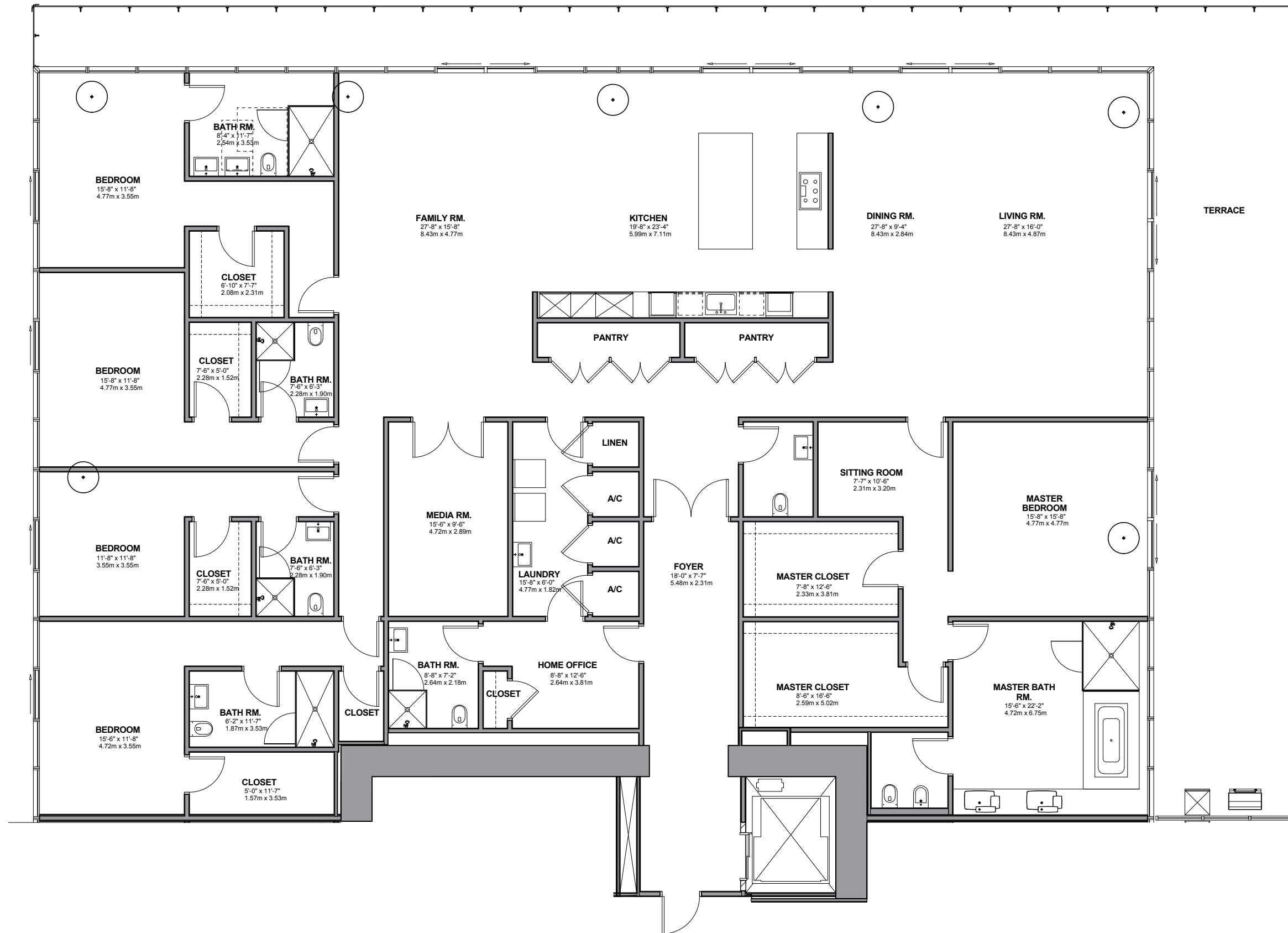


AREA CALCULATION: TYPE As5		
INTERIOR:	EXTERIOR:	TOTAL:
3811 SF	808 SF	4619 SF
354.05 m <sup>2</sup>	75.07 m <sup>2</sup>	429.12 m <sup>2</sup>

1  
MA205

SOUTH TOWER—UNIT AS4-LEVEL 17

1/4" = 1'-0"



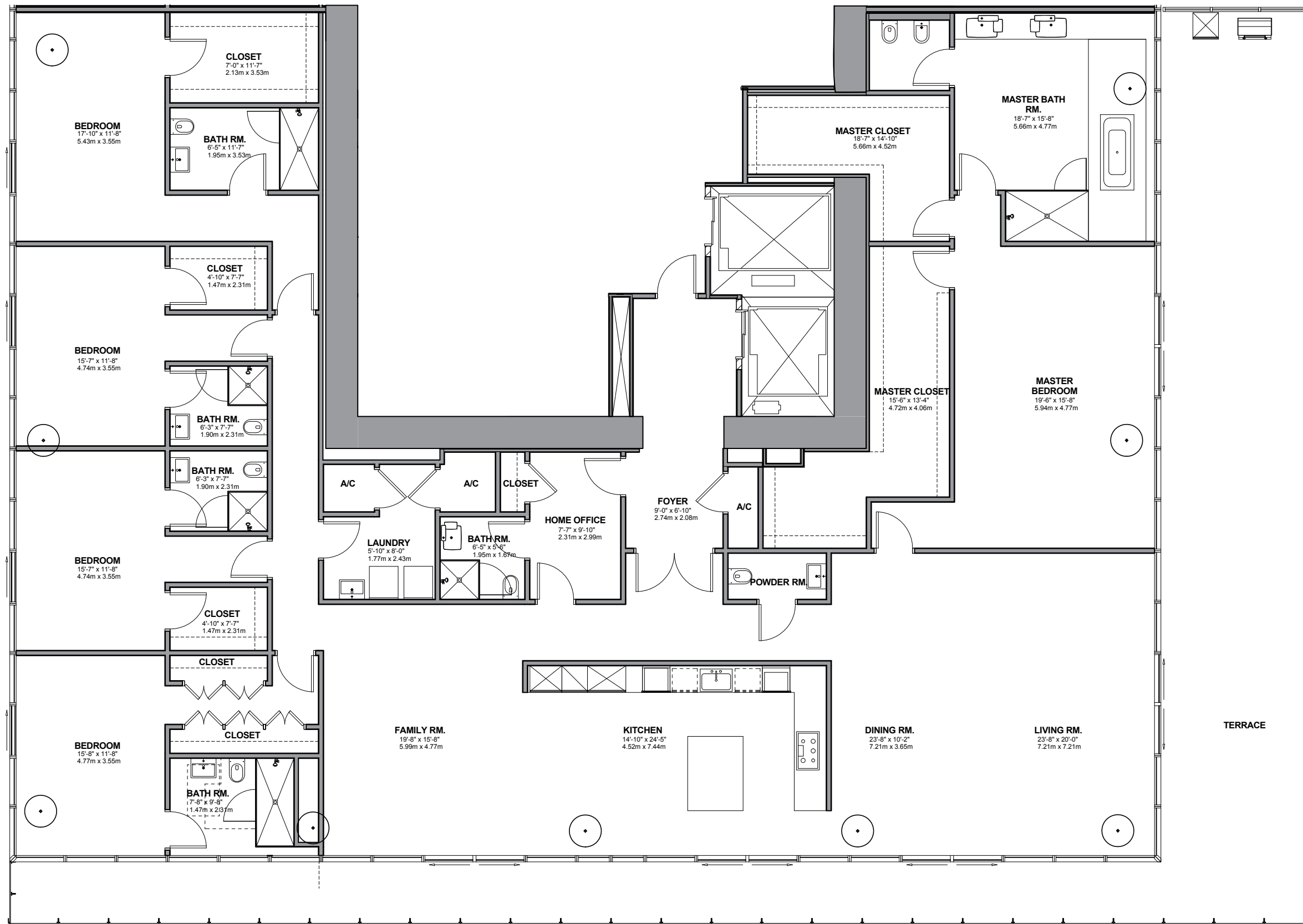
**AREA CALCULATION: TYPE An5**

INTERIOR:	EXTERIOR:	TOTAL:
5340 SF	1178 SF	6518 SF
496.10 m <sup>2</sup>	109.44 m <sup>2</sup>	605.54 m <sup>2</sup>

1  
MA205

**SOUTH TOWER—UNIT PHN5-LEVEL 18-21**

1/4" = 1'-0"



**AREA CALCULATION: TYPE As5**

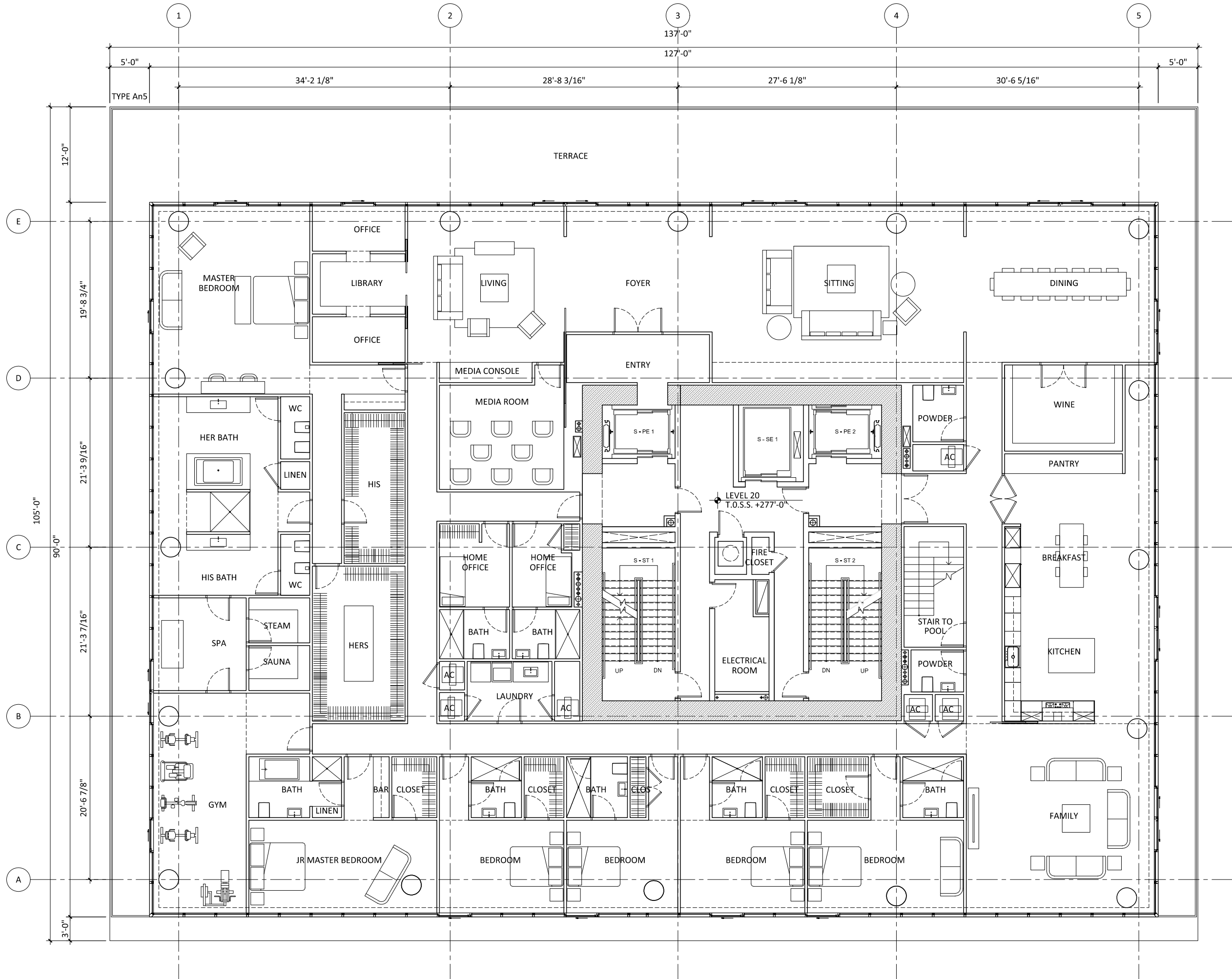
INTERIOR:	EXTERIOR:	TOTAL:
4840 SF	1251 SF	6091 SF
449.65 m <sup>2</sup>	116.22 m <sup>2</sup>	565.87 m <sup>2</sup>

1  
MA205

**SOUTH TOWER—UNIT PHS5-LEVEL 18-21**

1/4" = 1'-0"

PENTHOUSE



AREA CALCULATION IN SQUARE METERS

AREA CALCULATION: TYPE PH6		
INTERIOR:	EXTERIOR:	TOTAL:
939.97m <sup>2</sup>	225.66m <sup>2</sup>	1165.63m <sup>2</sup>

AREA CALCULATION IN SQUARE FEET

AREA CALCULATION: TYPE PH6		
INTERIOR:	EXTERIOR:	TOTAL:
10118 SQ. FT.	2429 SQ. FT.	12547 SQ. FT.



NORTH TOWER



AREA CALCULATION: TYPE An4		
INTERIOR:	EXTERIOR:	TOTAL:
4276 SF	1325 SF	5601 SF
397.25 m <sup>2</sup>	123.10 m <sup>2</sup>	520.35 m <sup>2</sup>



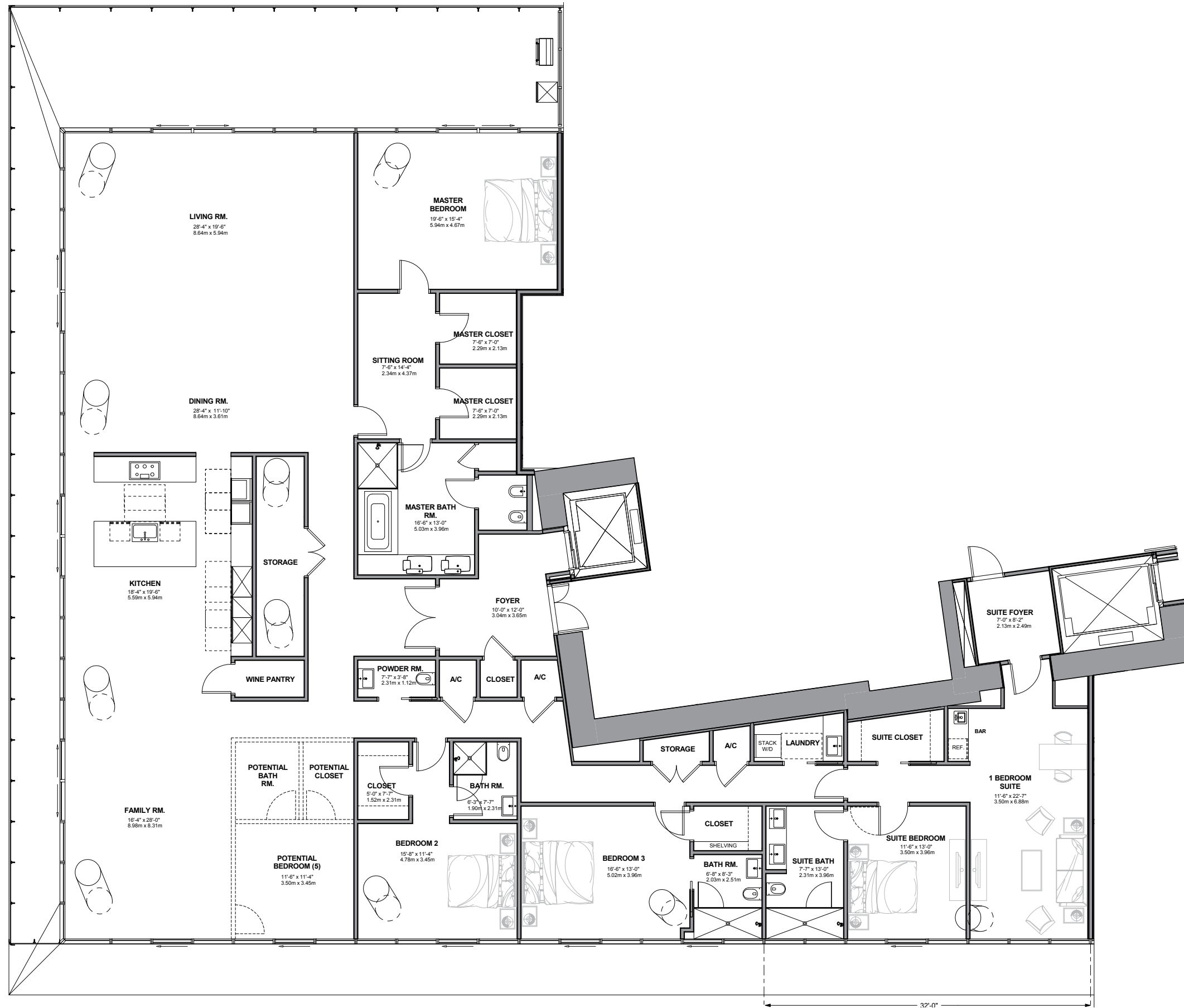


AREA CALCULATION: TYPE An5		
INTERIOR:	EXTERIOR:	TOTAL:
5166 SF	999 SF	6165 SF
479.94 m <sup>2</sup>	92.81 m <sup>2</sup>	572.75 m <sup>2</sup>

1  
MA205

**NORTH TOWER—UNIT AN5-LEVEL 12**

1/4" = 1'-0"

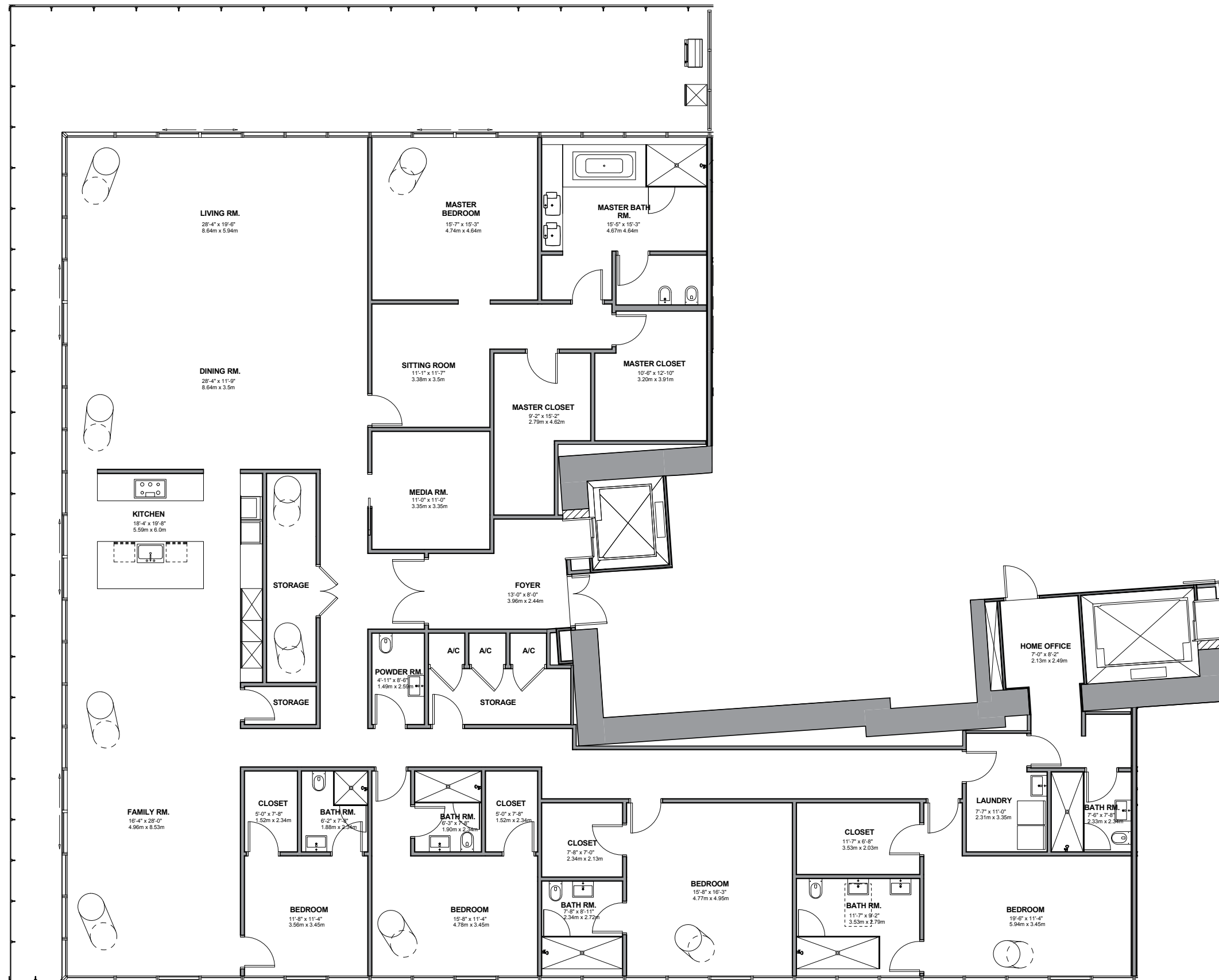


AREA CALCULATION: TYPE An5		
INTERIOR:	EXTERIOR:	TOTAL:
5166 SF	999 SF	6165 SF
479.94 m <sup>2</sup>	92.81 m <sup>2</sup>	572.75 m <sup>2</sup>

1  
MA205

**NORTH TOWER—UNIT AN5-LEVEL 12 OPTIONAL GUEST SUITE**

¼" = 1'-0"



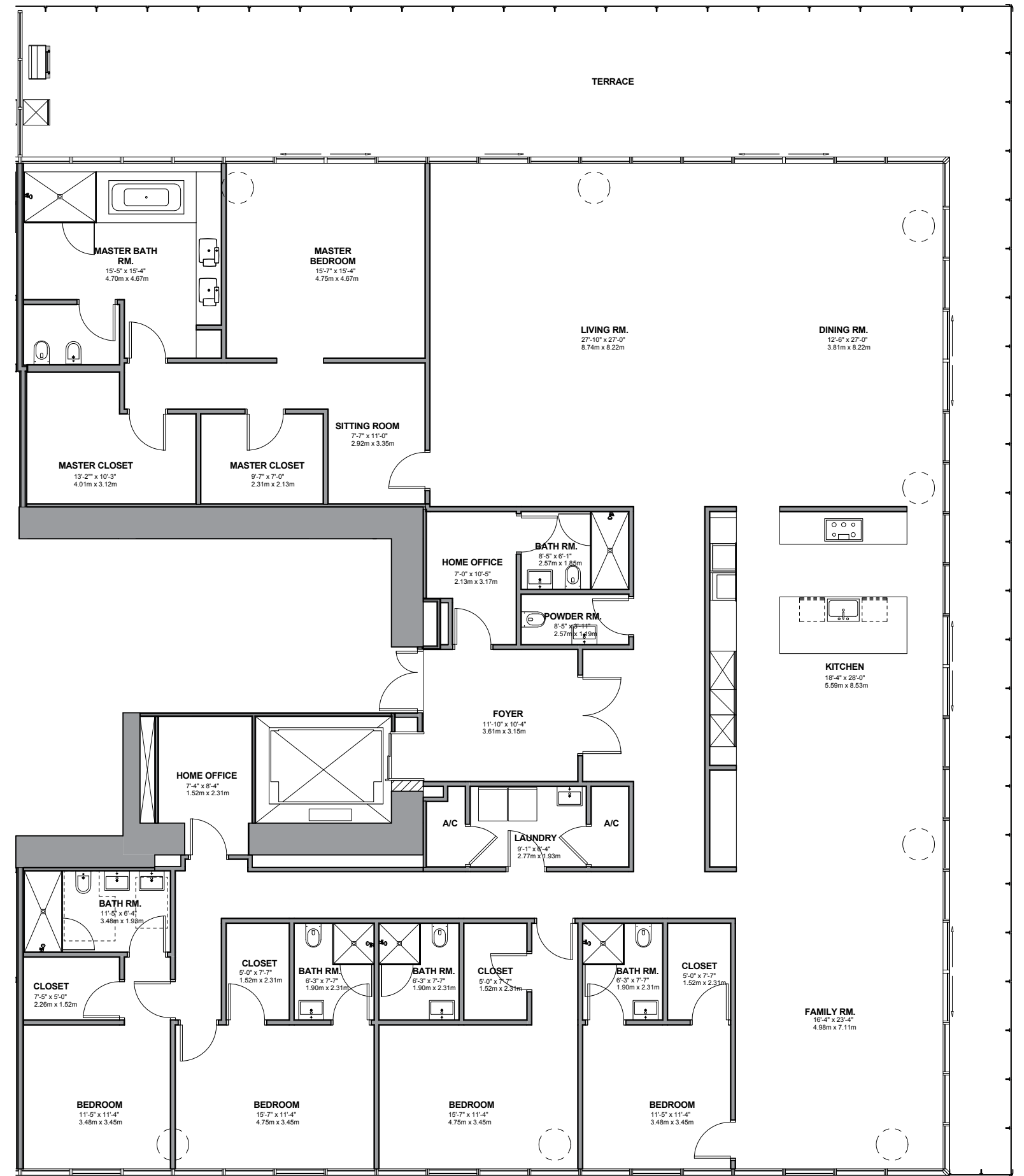
**AREA CALCULATION: TYPE An5**

INTERIOR:	EXTERIOR:	TOTAL:
5671 SF	1139 SF	6810 SF
526.85 m <sup>2</sup>	105.82 m <sup>2</sup>	632.67 m <sup>2</sup>

1  
MA205

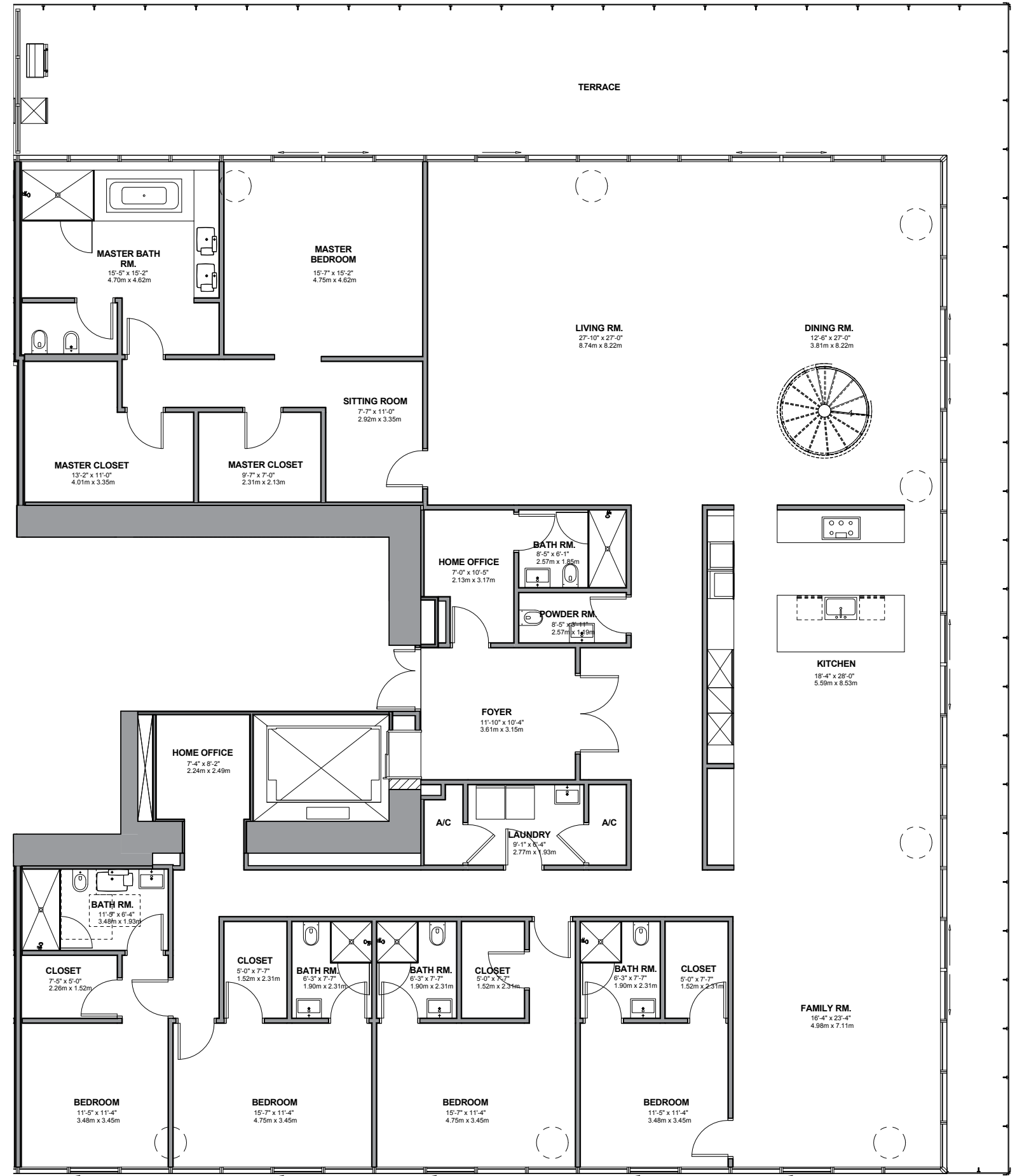
**NORTH TOWER—UNIT AN5-LEVEL 15**

1/4" = 1'-0"



**AREA CALCULATION: TYPE PHs5**

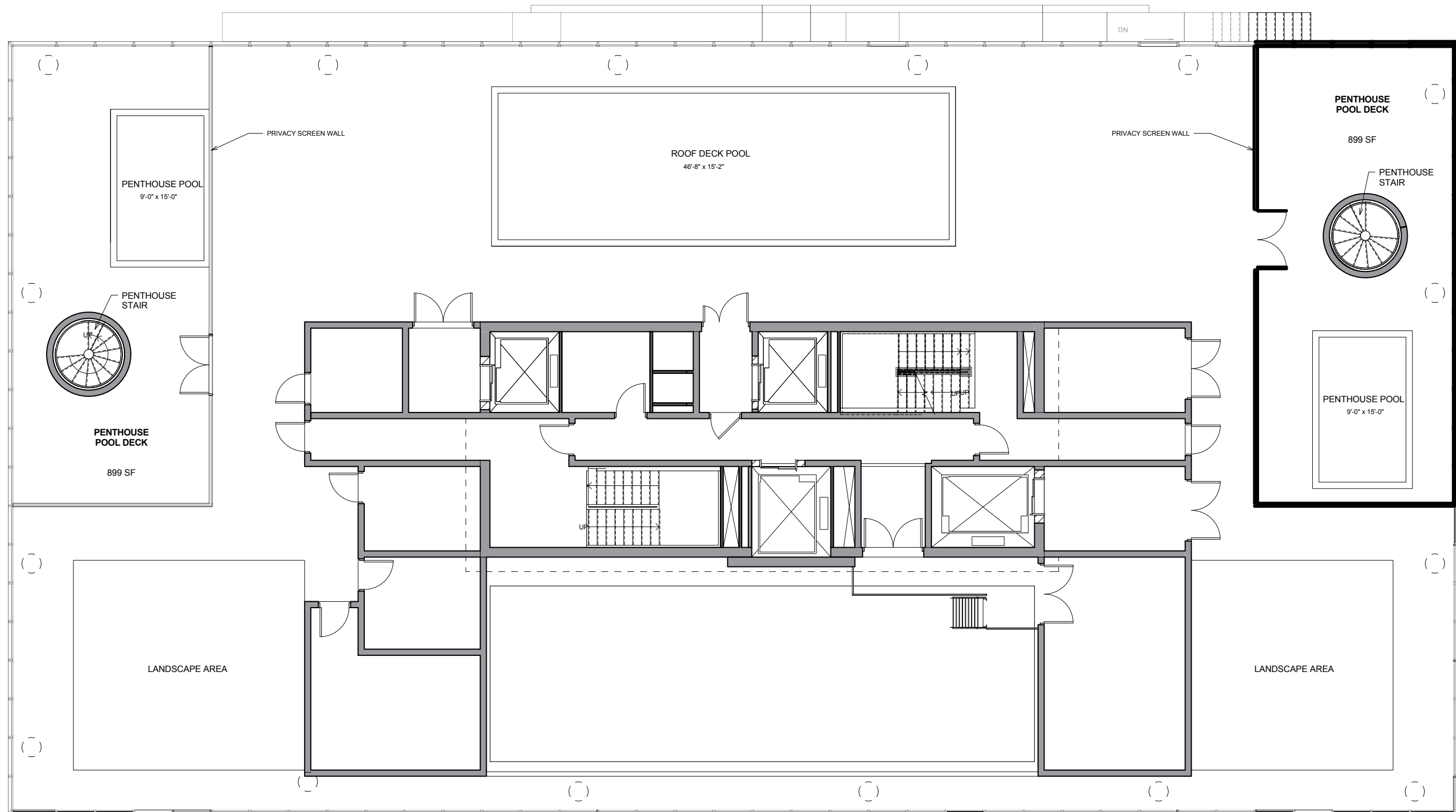
INTERIOR:	EXTERIOR:	TOTAL:
5142 SF	1276 SF	6418 SF
477.71 m <sup>2</sup>	118.54 m <sup>2</sup>	596.25 m <sup>2</sup>



**AREA CALCULATION: TYPE PHs5**

INTERIOR:	EXTERIOR:	TOTAL:
5142 SF	1276 SF	6418 SF
477.71 m <sup>2</sup>	118.54 m <sup>2</sup>	596.25 m <sup>2</sup>





1  
MA158

**NORTH TOWER PHN5-PARTIAL ROOF DECK LEVEL FLOOR PLAN**

3/16" = 1'-0"

All dimensions are approximate and all floor plans and development plans are subject to change by the developer without notice. Stated dimensions are measured to the exterior boundaries of the exterior walls and the centerline of interior demising walls in fact vary from the dimensions that would be determined by using the description and definition of the "Unit" set forth in the Declaration (which generally only includes the interior airspace between the perimeter walls and excludes interior structural components). For your reference, the area of the Unit, determined in accordance with these defined unit boundaries, is set forth on Exhibit "3" to the Declaration contained in the Prospectus. Note that measurements of rooms set forth on this floor plan are generally taken at the greatest points of each given room (as if the room were a perfect rectangle), without regard for any cutouts. Accordingly, the area of the actual room will typically be smaller than the product obtained by multiplying the stated length times width. All dimensions are approximate, and all floor plans and development plans are subject to change.

Equal housing opportunity, Broker participations welcome oral presentation cannot be relied upon as correctly stating the representation of the Developer, for correct representation, make reference to the documents required by section 718.503 Florida Statutes, to be furnished by the Developer or Buyer or Lessee. Not an offer where prohibited by State Statutes. All Illustrations are artist conceptual renderings and are subject to change without notice.

